



# VisualSP™ 2013 Installation Procedure

# Contents

- Contents ..... 1
- Introduction ..... 2
- Take inventory of VisualSP files ..... 3
- Install VisualSP ..... 4
- Test the Solution ..... 12
  - Page ..... 13
  - Document library ..... 13
  - Tasks list ..... 13
  - Calendar list ..... 13
  - Pop-up dialog box showing video help ..... 14
- Un-install VisualSP ..... 15

# Introduction

VisualSP™ is a SharePoint Help System with the main goal of enabling sustainable SharePoint adoption in the organization. It provides SharePoint end users the in-context, on-demand help and training they need to be successful working within SharePoint.

**Watch the system overview video:**

<http://sharepoint-videos.com/products/visualsp/visualsp-video-showcase/#overview>

The following steps need to be performed on one of your SharePoint web front-end servers by a SharePoint Server Administrator. After performing these steps, VisualSP will automatically install itself on all of your SharePoint web front-end servers in the farm.

After installation, please refer to the [customization/evaluation guide](#) to learn how to customize the system to your needs.



**Notes:**

*It is advisable to **back up** your SharePoint environment before installing any 3<sup>rd</sup> party software including VisualSP.*

*If installing trial version, it is advisable to not deploy the trial in a Production environment. Instead, deploy in a **development** or **testing** environment.*

# Take inventory of VisualSP files

The system ships with the following two main components:

- **VisualSPInstaller.exe** – VisualSP Installer application
- **VisualSP2013HelpItems.zip** - VisualSP farm hub content containing videos, documents and images (trial version file: **VisualSP2013HelpItems\_trial.zip**)

Place both files in *C:\VisualSP* folder on the server.



**Note:**

***Do not unzip the VisualSP2013HelpItems.zip file!***

*For a current list of all content provided by VisualSP, please see*

*<http://www.visualsp.com>*

# Install VisualSP

Please follow the steps exactly as they appear below.



**Note:** Make sure you are logged in to the web server as a **SharePoint Server Administrator**

Create a new **site collection** under any web application within your farm which will serve as the main hub for the VisualSP content

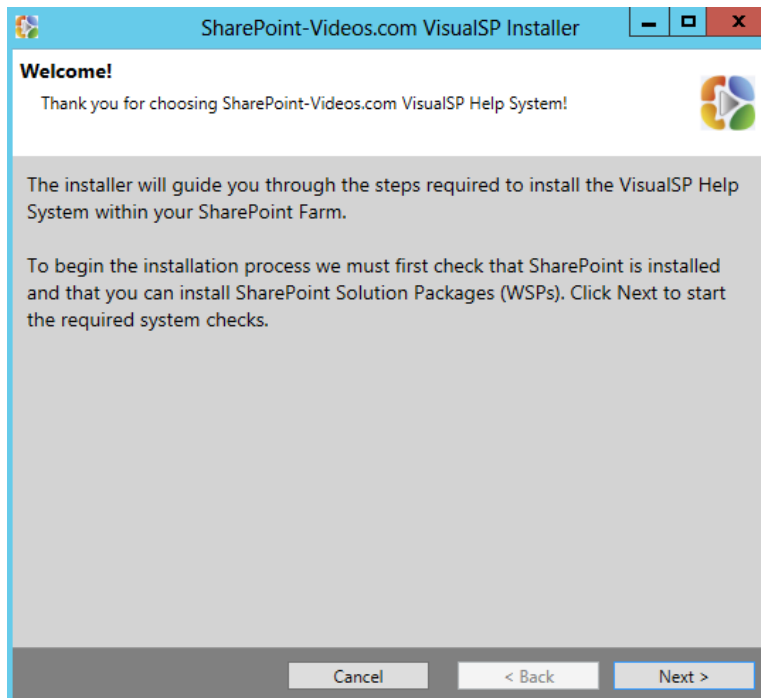
**Site Template** – Team Site

**Title** – VisualSP Farm Hub

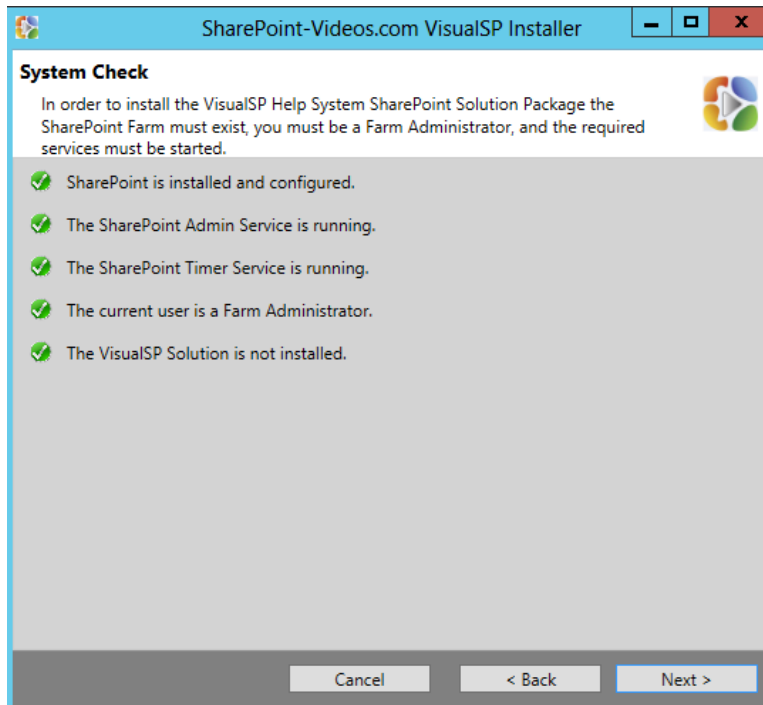
**URL** – VisualSPFarmHub

**Note:** If you already created the above site collection as part of a Trial install provided to you earlier, you may skip this step.

Double click on the **VisualSPInstaller.exe** file to start the installer



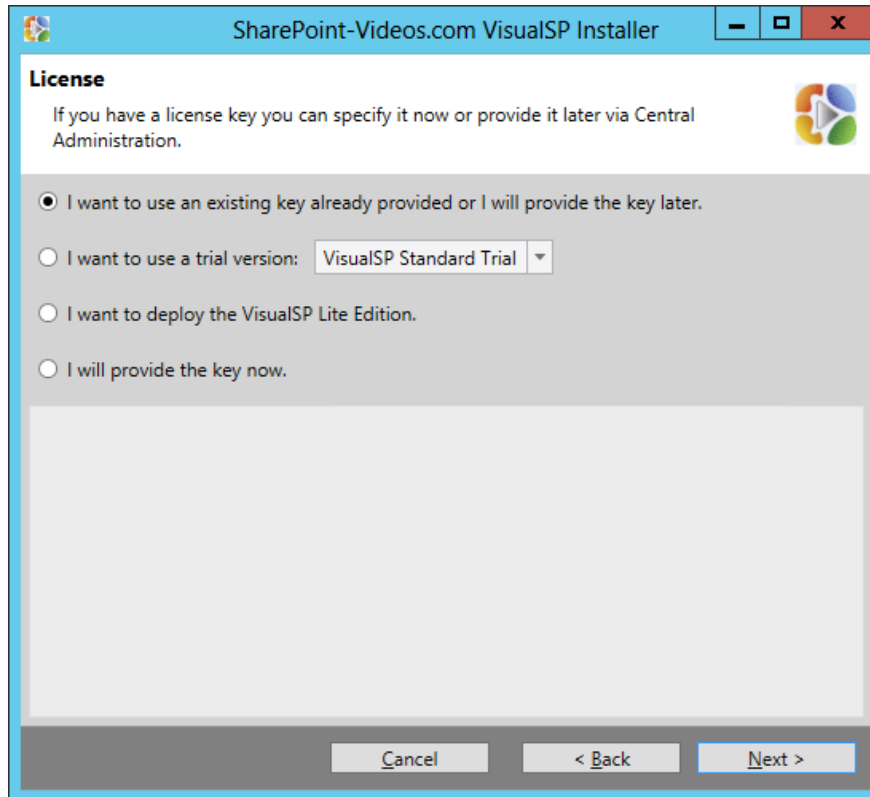
Click **Next** to continue.



If all system checks pass, click **Next** to continue.



Read the End User License Agreement. If you agree with the agreement, click the checkbox to indicate your agreement and click **Next**.



Please select the correct choice from the list on the screen depicted in the image, above.

A **License Key** should have been provided to you unless you are installing a 30 day trial (for our Enterprise, Express or Standard version) in which case you do not need a key. Copy the license key and paste it in the box the installer will expose to you after you make your selection.

[Click here](#) for more information and to explore differences between each version.

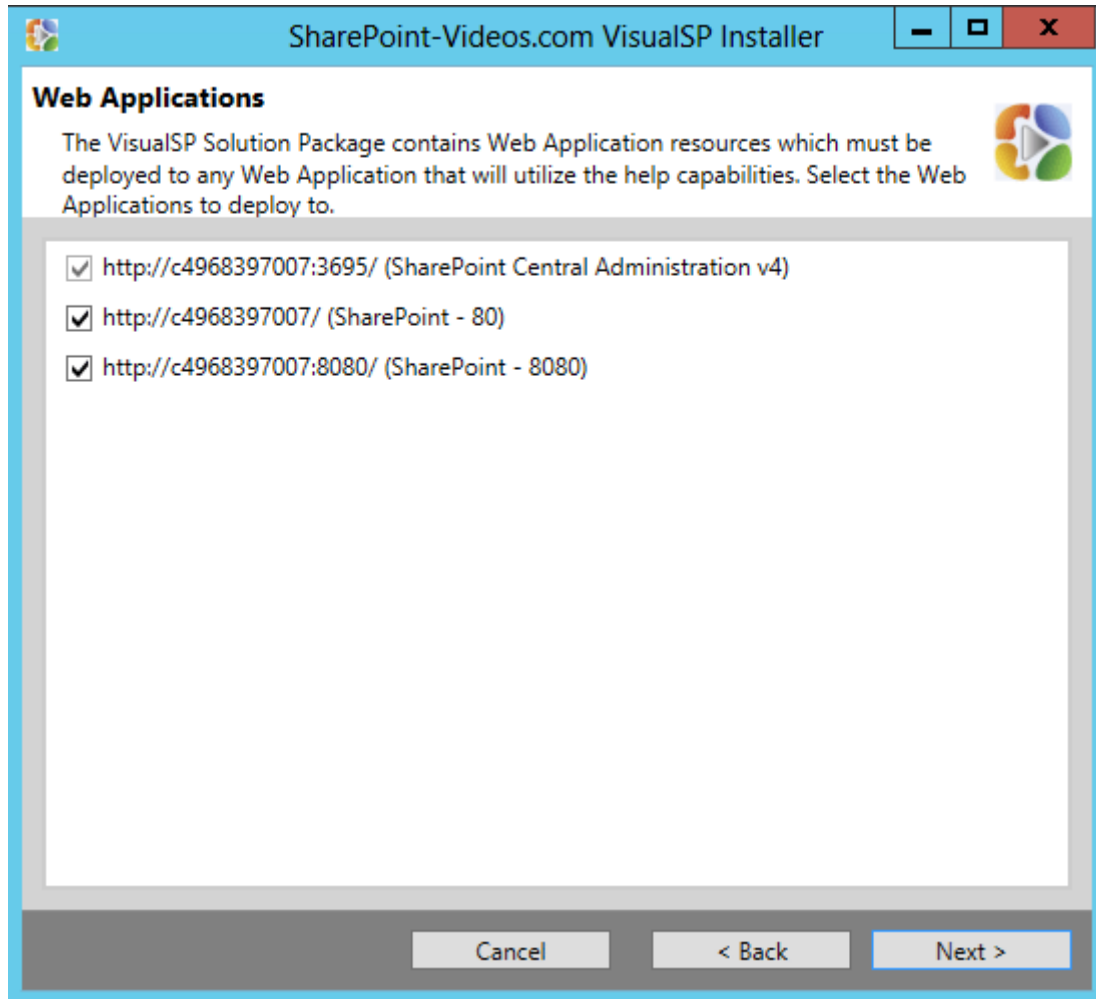


**Note on VisualSP Lite Edition:** The Lite edition of VisualSP is provided with a free perpetual license. [Click here](#) to find out more information about this edition.

Lite edition differs from other editions in the following way:

- Does not have the ability to customize existing Help content or create your own
- Content (videos, documents, tip sheets) is not provided to the client to host in-house, but it's delivered through our cloud service
- Does not show analytics of which content is being utilized and by who

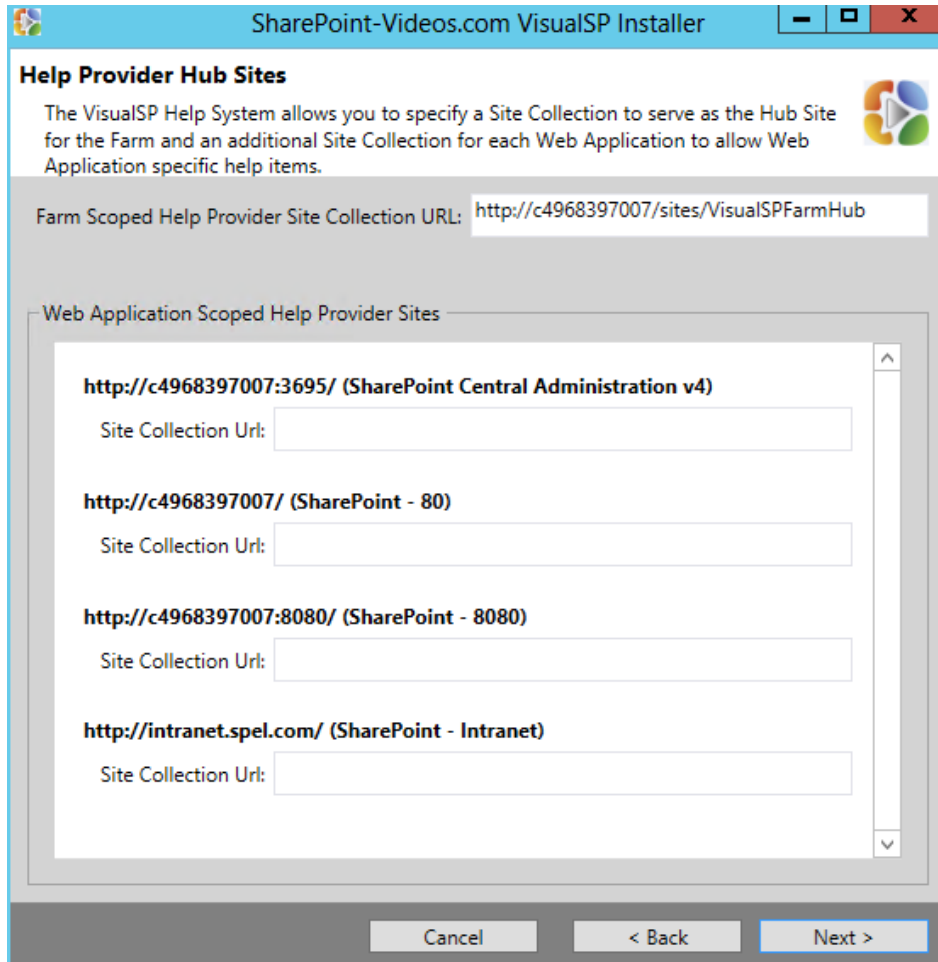
You will not require a key if you are using our installer to deploy the Lite edition. Simply click on the radio button to the left of this option to instruct the installer to proceed with this deployment.



Select the checkboxes for all the web applications where you would like to install the VisualSP Help System.

***Note:** The Central Administration web application is clicked and the option is greyed out, by default, and cannot be changed.*

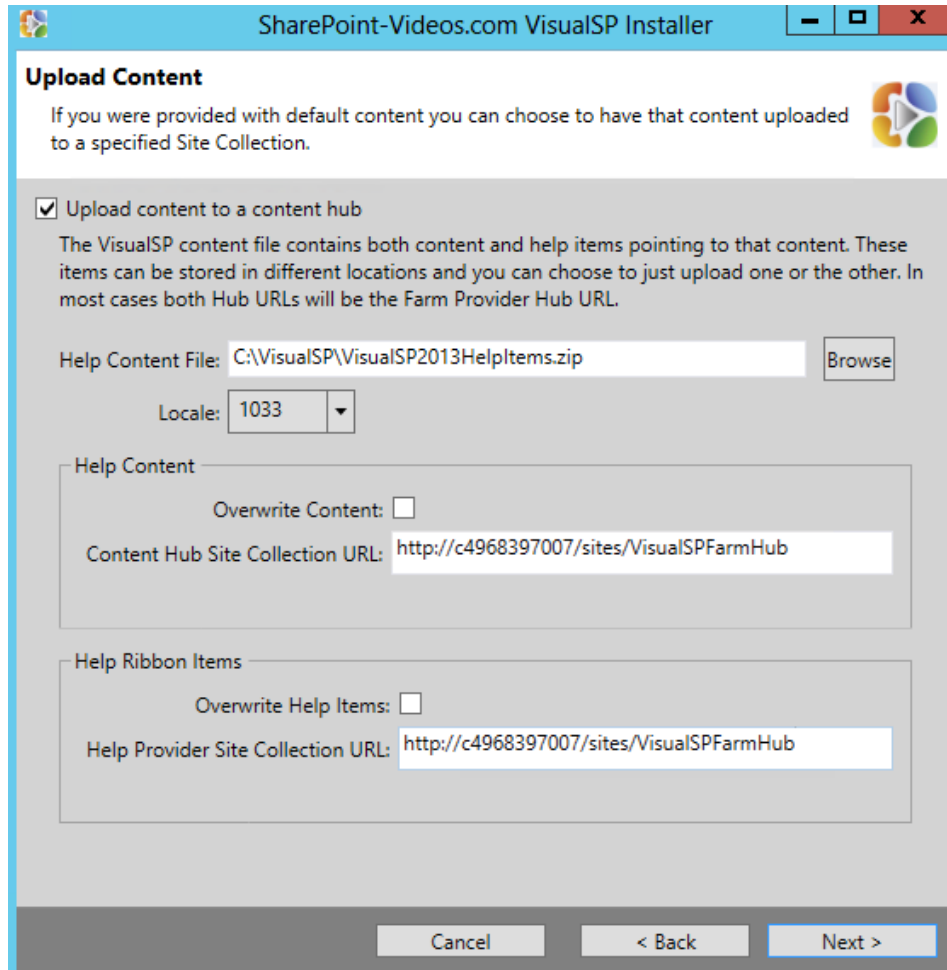




The **Farm Scoped Help Provider Site Collection URL** will be the URL of the site collection you created to serve as the VisualSP Farm Hub in the first step of the install process.

#### Optional

Set the **Site Collection URL** for the site collection in each web application that would serve as the hub for the Help content for that web application. If the field is left blank, the VisualSP Farm Hub will serve the content for that (those) web application(s).



Click the **Upload content to a content hub** checkbox and provide the location for the Help items zip file in **C:\VisualSP**.

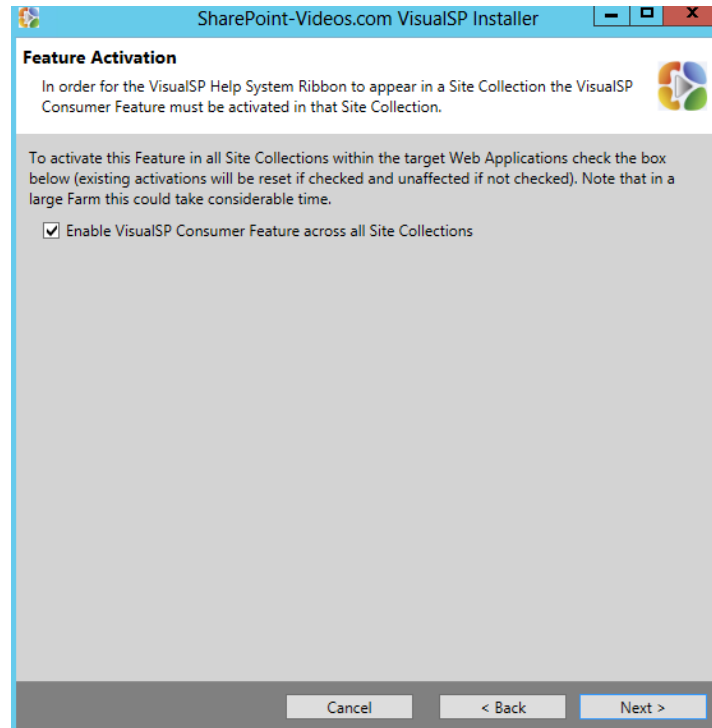


**Note:** Leave the **Locale** selection to **1033** which is the code for American English

In the **Help Content** and **Help Ribbon Items** sections, both will be the URL of the site collection you created to serve as the VisualSP Farm Hub in the first step of the install process.



**Note:** For trial installation, leave the **Overwrite Content** and **Overwrite Help Items** checkboxes unchecked. If you already uploaded trial content provided before and now wish to replace that with the production version, check the checkboxes.



Click the checkbox to enable VisualSP across all site collections within the earlier chosen web applications.



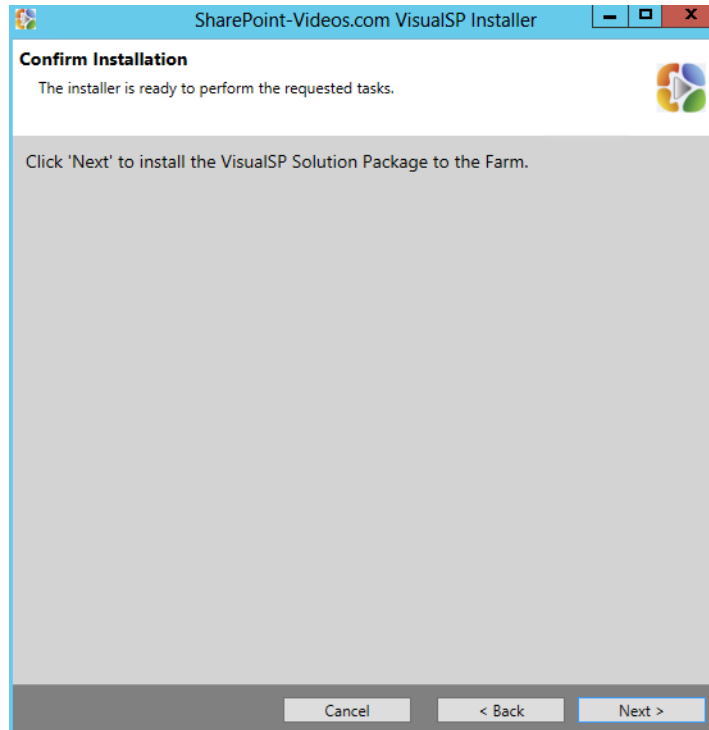
**Notes regarding VisualSP Express:**

*If you are installing VisualSP Express, you will need to manage Help items at each site collection instead of being able to do it from a central location.*

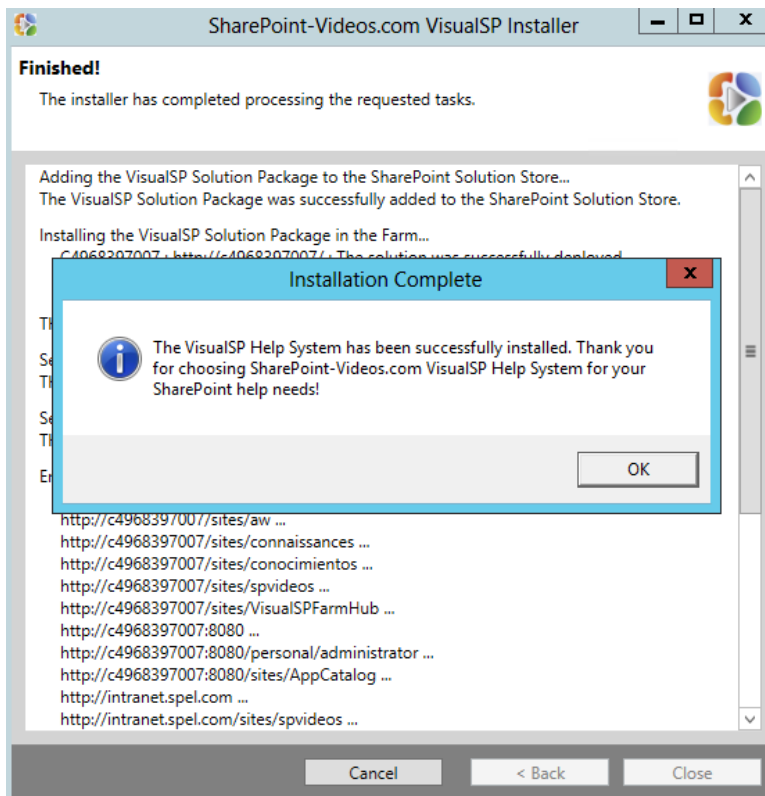
After the installation, even though VisualSP will be active across all site collections, the Help tab will not show up in a site collection unless Help items are declared at that site collection.

The list of Help items can be imported by first exporting the list of Help items from the hub. The Help items can also be created one by one and they will start showing up at the appropriate Help tab.

Please refer to the [customization/evaluation guide](#) to learn more about how to customize the Express version.



Click **Next** to confirm installation of the system.



Once the system is installed, it will show the above successful message.

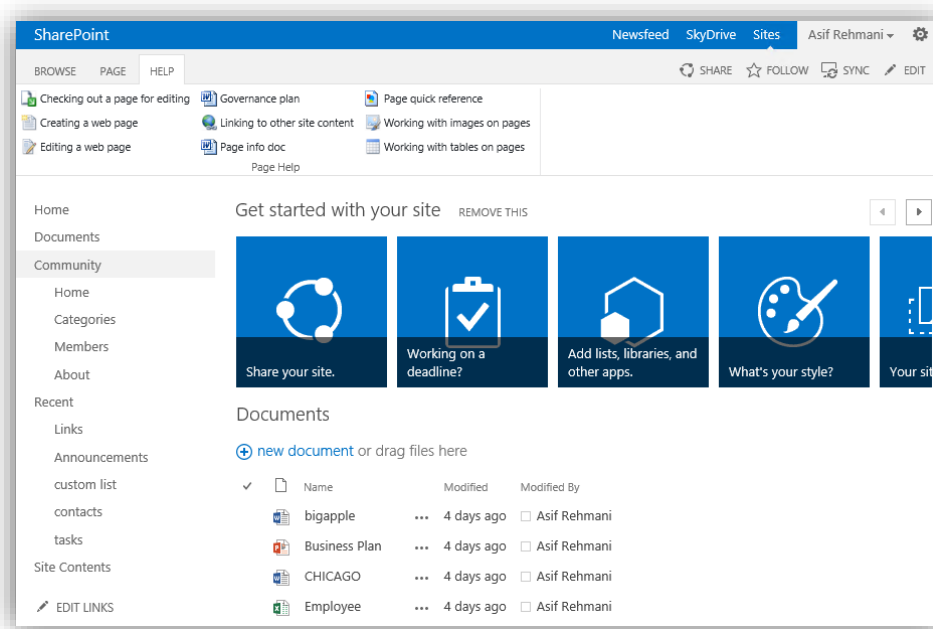
# Test the Solution

Once VisualSP is installed, the Help tab should be available across all site collections if you have installed the Standard version.

VisualSP Express will require having the Help items declared at each site collection level before they show up in the Help tab for that site collection.

Look out for the Help tab in the following types of pages:

1. Web page
2. List and Library pages
3. List and Library Settings pages
4. Site Settings page



Below are a few examples to test out the functionality.

**Note:** *The content might differ from below in your installation dependent on your configuration or the latest updates you have been provided.*

## Page

|                                 |                               |                              |
|---------------------------------|-------------------------------|------------------------------|
| BROWSE                          | PAGE                          | HELP                         |
| Checking out a page for editing | Governance plan               | Page quick reference         |
| Creating a web page             | Linking to other site content | Working with images on pages |
| Editing a web page              | Page info doc                 | Working with tables on pages |
| Page Help                       |                               |                              |

## Document library

|                                  |                                 |  |                                   |
|----------------------------------|---------------------------------|--|-----------------------------------|
| BROWSE                           | HELP                            | FILES                                  | LIBRARY                           |
| Document Library info doc        | Checking in a document          | Send a document to another library     | Connecting the library to Outlook |
| Document Library quick reference | Checking out a document         | Upload document to a library           |                                   |
|                                  | Creating a new document version | Upload multiple documents to a library |                                   |
| Help documents                   |                                 | Library videos                         |                                   |
| Office integration videos        |                                 |  |                                   |

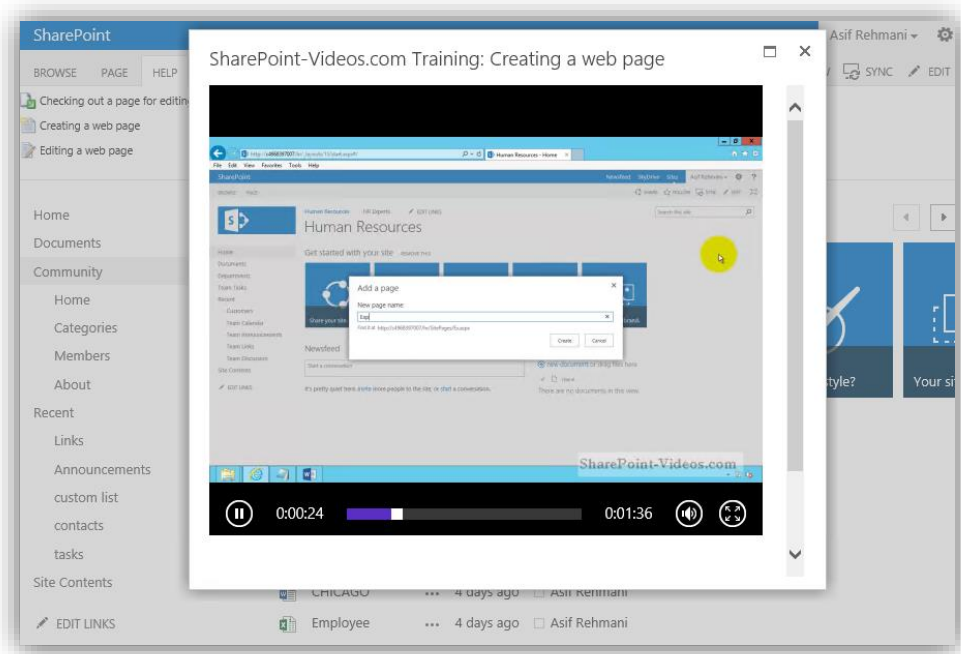
## Tasks list

|                           |                            |                                 |      |
|---------------------------|----------------------------|---------------------------------|------|
| BROWSE                    | HELP                       | TASKS                           | LIST |
| List quick reference      | Creating a list item       | Connecting task list to Outlook |      |
|                           | Deleting items from a list | Export list data to Excel       |      |
|                           | Editing an item in a list  | Open list data with Access      |      |
| Help documents            |                            | List videos                     |      |
| Office integration videos |                            |                                 |      |

## Calendar list

|                           |                            |                               |                            |
|---------------------------|----------------------------|-------------------------------|----------------------------|
| BROWSE                    | HELP                       | EVENTS                        | CALENDAR                   |
| Calendar info doc         | Creating a Calendar list   | Editing an item in a list     | Export list data to Excel  |
| List quick reference      | Creating a list item       | Overlaying multiple calendars | Open list data with Access |
|                           | Deleting items from a list |                               |                            |
| Help documents            |                            | List videos                   |                            |
| Office integration videos |                            |                               |                            |

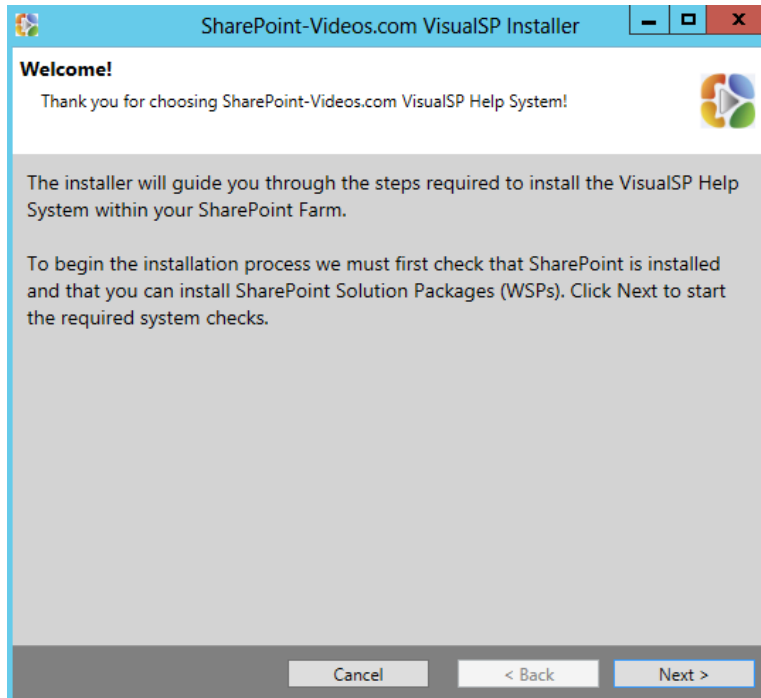
## Pop-up dialog box showing video help



Try out the solution in various site collections within the farm to make sure all videos, documents and images appear as expected.

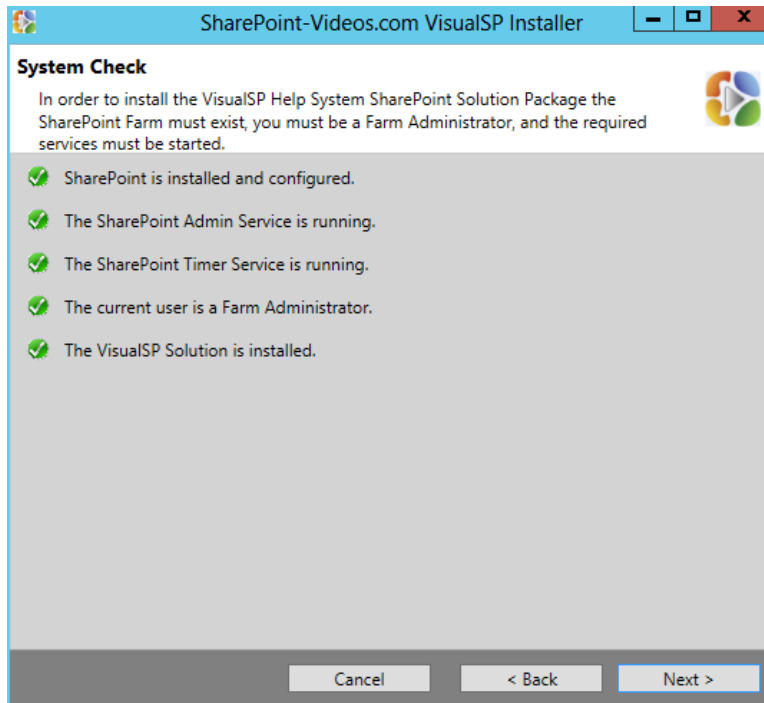
# Un-install VisualSP

If you need to un-install VisualSP for any reason, please perform the following procedure:

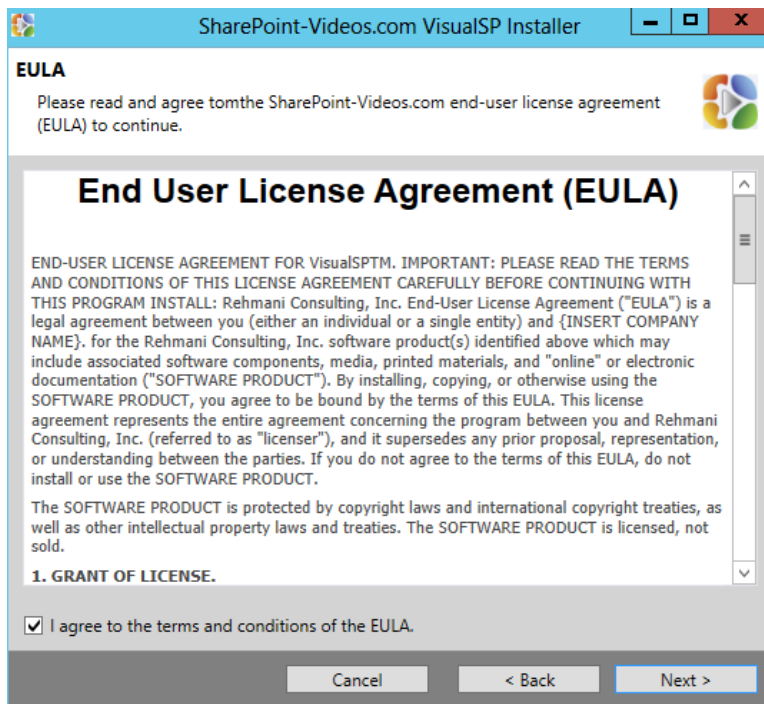


Click **Next**

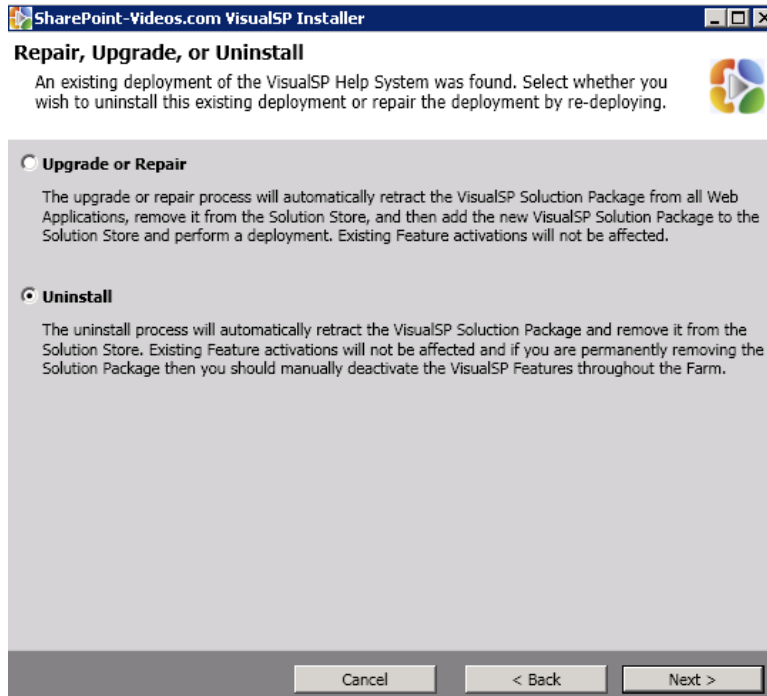




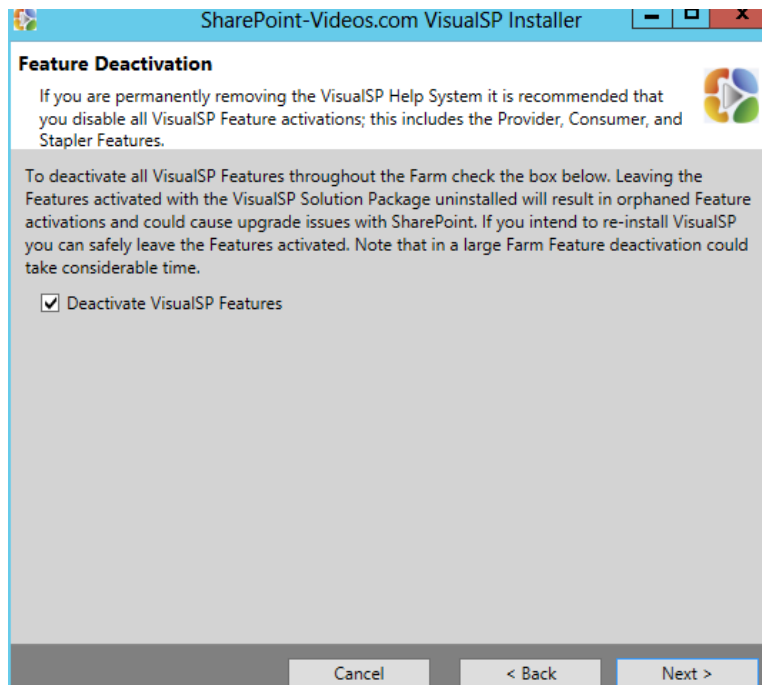
Click **Next**



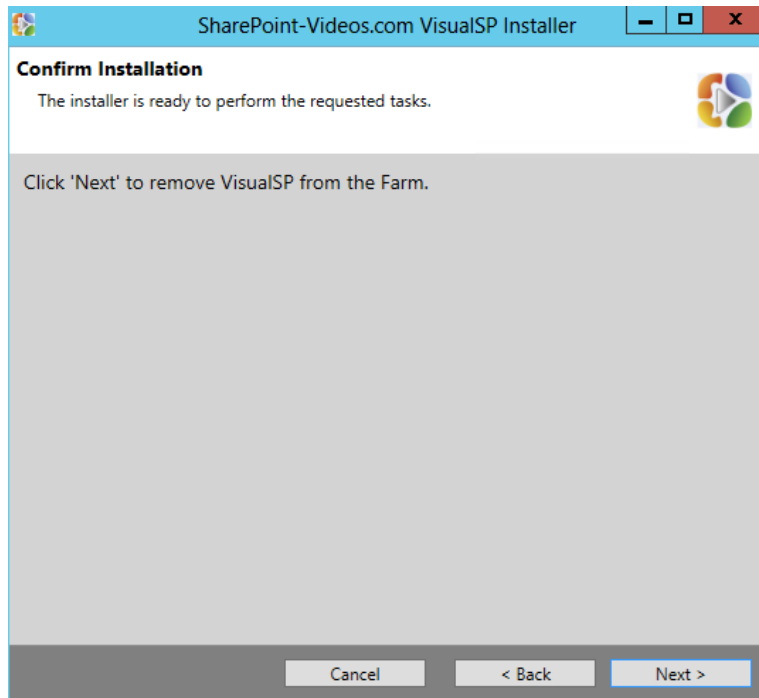
Read the EULA and if you agree, click the checkbox and click **Next**



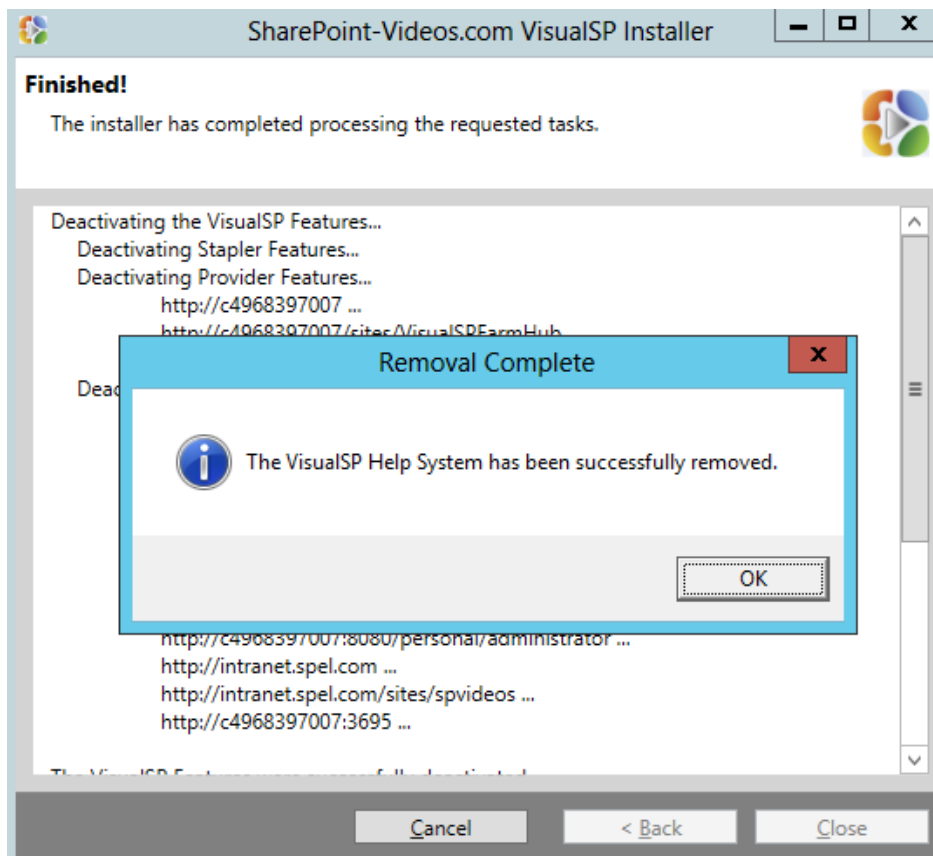
Choose **Uninstall** then click **Next**.



Click checkbox to **Deactivate VisualSP Features** from all site collections in the farm and then click **Next**.



Click **Next** to begin uninstallation of VisualSP from the farm.



VisualSP Help system has been uninstalled from the system.



**Note:** *All of the media (videos, help documents, help screenshots) populated in the VisualSP Farm Hub site collection will still remain. You can go ahead and delete the data and/or the site collection completely if you don't need it anymore.*

To get more information on the VisualSP Help System, please visit:

<http://www.visualsp.com>